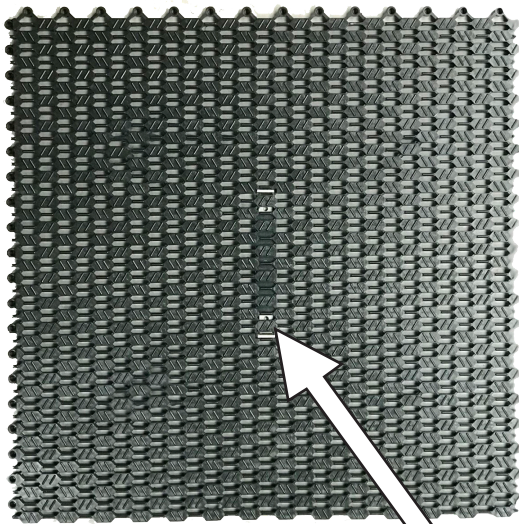


# Snap Trax Tile

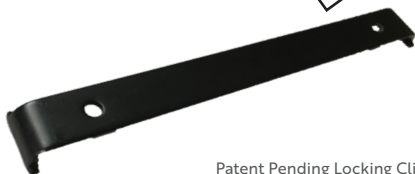
*Snap Trax Tile will effectively scrape off dirt, mud and initial moisture before entering the building.*

Snap Trax is a modular, interlocking tile system made from recyclable 100% TPE UV-resistant compound. This dimensionally stable tile will not shrink or gap while effectively scrapping dirt and other debris from foot traffic.

- Patent pending locking clip to keep grids in place in high shear locations.
- Interlocking 50cm x 50cm tiles allow versatility and customization for virtually any vestibule.
- Ability to link both carpeted and non-carpet versions in the same grid to offer better wiping/scraping in one system!
- Rugged TPE capable of handling 1,000lb rolling load.
- Large free area for dirt to fall through.
- 100% TPE compound is dimensionally stable in all environmental conditions



Black Only

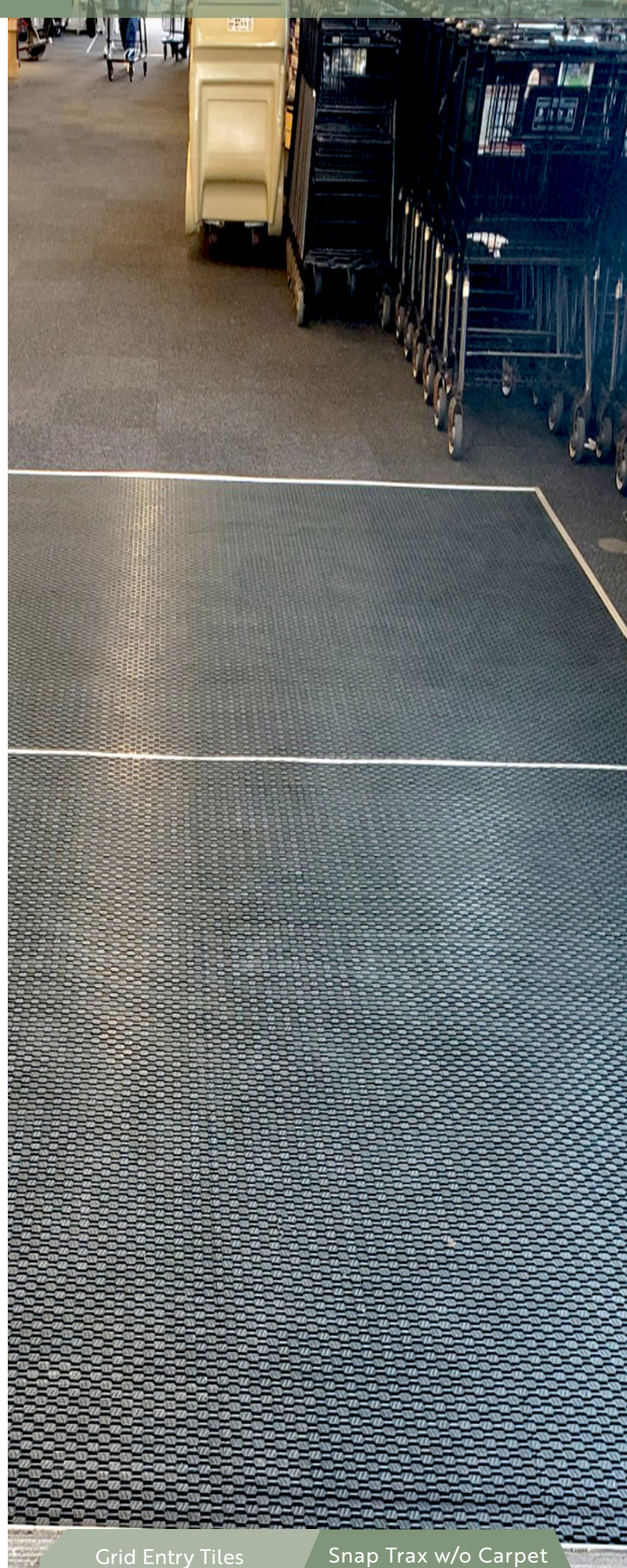


Patent Pending Locking Clip



**portico**  
SYSTEMS

Flooring Solutions that Simplify.  
1+ 877 285 8899 • [www.porticosystems.com](http://www.porticosystems.com)



Grid Entry Tiles

Snap Trax w/o Carpet

# Snap Trax Tile



## > MODULAR GRID SYSTEM

### SUGGESTED USES (NOT LIMITED TO)

Class-A Building Entrances, Grocery & Department Stores, Lobbies, Libraries, Office Environments, Retail Showrooms, etc.

### SPECIFICATIONS

Snap Trax Tile without Carpet

Construction:	100% TPE
Total Height:	0.47"
Total Weight:	2.5 lbs
Tile Size:	19.69" x 19.69"
Tiles (19.69" x 19.69" ea.):	10 tiles per box (27.1 sq. ft.)

Snap Trax Plus with Carpet (also available)

Construction:	TPE with Nylon Carpet 0.47"
Total Height:	3.0 lbs
Total Weight:	18.70" x 1.38"
Insert Carpet:	19.69" x 19.69"
Tile Size:	12 tiles per box (32.5 sq. ft.)
Tiles (19.69" x 19.69" ea.):	

Snap Trax Clips

Clip Material:	304 Stainless Steel
Clip Color:	Black (Electro Coating)
Clip Size:	5.7" x 0.55"
Clip Thickness:	2mm
Clip Weight:	0.4kg

LIMITED WARRANTY

2 years - Ask for warranty sheet for details

### MAINTENANCE

**Vacuuming:** Proper vacuuming is the single most important part of a preventive maintenance program. The following should be taken into consideration for how often to vacuum; Snap Trax location, appearance expectations, type of vacuum equipment available, anticipated traffic upon each location, and soiling conditions prevalent to the location.

**Spot Cleaning:** For maintaining an appearance level, spots and stains can be the greatest challenge. The key to successfully removing a spot or stain is immediate action. This requires daily inspections. For a spill, blot immediately with a clean, white absorbent cloth, and work from the edge of the spot towards the center to help prevent it from spreading. Spots should be removed using an industrial grade spot remover. For oily stains a nonflammable dry cleaning solvent works best. When it comes to chewing gum, a can of freezing solution will easily break down the gum to be vacuumed away.

**Periodic Maintenance (as needed):** The Snap Trax product allows for dirt and moisture to fall through to the surface underneath. This will require periodic cleaning by using the following process: remove the product to clean/sweep debris from within recess. Wash and scrub to remove any caked on debris.

For Restorative Carpet Cleaning processes please contact your Portico Systems sales representative.

### TECHNICAL SPECIFICATIONS

Friction (ASTM D-2047-96)	Wet .60
Standard Rolling Load	1,000lbs
Fire Resistance (ASTM E648)	Class 1
UV Resistance	Utilizes recyclable, UV resistant PVC/NBR

### ENVIRONMENT

Portico Systems does not use any substances currently included in the SVHC (Substances of Very High Concern) list under REACH (Registration, Evaluation, Authorization and Restriction of Chemical substances) in any matting products. All PVC grid products are 100% recyclable.

### LEED-NC:

VERSION 3 IEQ CREDIT 5, 4.3 | MR CREDIT 4, 6

### INSTALLATION

**Preparation:** Before commencing installation, visually check the area and remove any lumps or ridges in the base that may be present. Vacuum and/or sweep as needed.

It is recommended that the entrance flooring system be installed as one of the final jobs to avoid damage associated with general building works. Unpack and inspect all materials to ensure they are free from transport damage. Check all components and tools required are available. Unroll/unpack the sections of matting and lay in a clean dry protected area to acclimatise and relax. Depending on duration of storage and ambient temperature, this process may take up to 24 hours. A heat gun can be used to aid relaxation of matting. When handling the rolls or large panels of matting at any time during the installation, avoid dragging or rough handling that may cause stretching or distortion.

**Tools Required:** Square, utility knife, a drill with 1/8" and 5/16" bits, a #2 Phillips fastener, a rubber mallet, and a tape measure.

For more information on how to install Snap Trax in your space, contact your Portico Systems sales representative.

## YOUR AUTHORIZED SALES REPRESENTATIVE:



experience it for yourself

Talk with your sales representative or request samples at [samples@porticosystems.com](mailto:samples@porticosystems.com)

Grid Entry Tiles

Snap Trax w/o Carpet